



Go with confidence.

Bullard Thermal Imagers with X-Factor Image Enhancement provide the clarity for firefighters to make decisions in the toughest conditions.

Decision-Making Thermal Imagers for Emergency Responders



Sharper Than Ever



Proven Durability



Better Under Fire

See your options at www.bullard.com



Every call equipped with Bullard.

Confidently equip your team with the most effective tools for your department's needs. Decision-making thermal imagers armed with X-Factor Image Enhancement technology and proven durability.



QXT™ Pro

- Top performance
- 640 x 480 resolution at 60 Hz
- X-Factor 2.0 Image Enhancement



NXT™ Pro

- Top performance
- 640 x 480 resolution at 60 Hz
- X-Factor 2.0 Image Enhancement
- NFPA 1801 Certified



DXT™

- Detailed images, balances budget and performance
- 320 x 240 resolution at 60 Hz
- X-Factor 2.0 Image Enhancement



TXS™

- One-button simplicity at an incredible value
- 320 x 240 resolution at 30 Hz
- X-Factor Lite Image Enhancement

www.bullard.com

Sharper than ever.

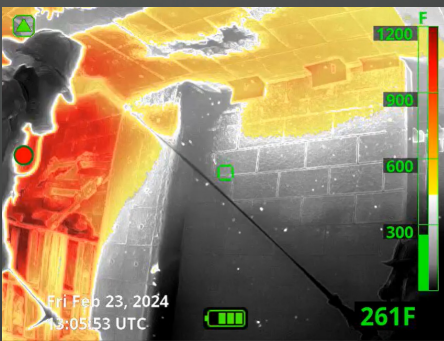
Bullard X-Factor Image Enhancement technology sharpens the distinction between objects and backgrounds and optimizes the image for greater clarity. Instantly understand your environment, find your way, and locate victims.

Elements like crisp white edge highlighting and exceptionally vivid images are key components of X-Factor Image Enhancement. This technology helps you recognize objects faster and identify flow patterns to more quickly understand the scene.



X-Factor Image Enhancement: What it means.

Super Red Hot



It's intuitive colorization. Kicking in at 500° F (260° C), this color threshold visually alerts firefighters when temperatures approach a range that may begin to damage personal protective equipment. Consistent and transparent color scheme for quick scene assessment.

Sharpest Details



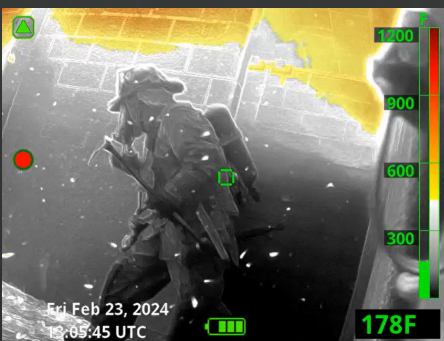
Highlights essential information. X-Factor 2.0 Image Enhancement features crisp white edge highlighting to make important details easy to identify and understand. Sharpest details available in X-Factor 2.0.

People-Focus



Critical for victim search. The entire image stays bright and detailed, helping reveal people even with high-heat elements elsewhere in the scene. People-focus available in X-Factor 2.0.

Seamless Gain Transition



Seamless operation. No forced shuttering when transitioning between hotter and cooler areas of a scene.

Fluid Viewing Technology



No choppy images. Smooth movement with fluid scenes. Opt for a high refresh rate to gather max info. Identify flow paths and avoid missing key details.



SEE These
Scenes In
Action!



SCAN ME

www.bullard.com



Customized deployment.

Each thermal imager model is optimized to balance essential features and top-quality images with your department's budget.

X-Factor Lite

Delivers exceptional resolution, with low-lag processing and crisp details, including:

- Super Red Hot colorization
- Fluid viewing technology
- Seamless gain transition

X-Factor 2.0

Offers highest performance, includes items from patented X-Factor Lite technology, plus including even more:

- Highest resolutions
- Vivid images with sharpest details
- People-focus



FEATURES	TXS	DXT	QXT Pro	NXT Pro
Deployment	Lightweight decision-maker. Incredible value.	Versatile Decision-making details.	Sharpest image. Best performance.	Sharpest image. Best performance, NFPA 1801 Certified
Image Enhancement	X-Factor Lite 320 x 240 resolution	X-Factor 2.0 320 x 240 resolution	X-Factor 2.0 640 x 480 resolution	X-Factor 2.0 640 x 480 resolution
Refresh Rate	30 Hz	60 Hz	60 Hz	60 Hz
Power	Replaceable battery; Up to 6 hours; Dual-bay charger	Internal battery; Up to 8.5 hours ; Wireless charger	Internal battery; Up to 6.5 hours; Wireless charger	Internal battery; Up to 6.5 hours; Wireless charger
Options	Single button operation	Basic & Advanced feature packs (optional)	Basic & Advanced feature packs (optional)	Basic & Advanced feature packs (optional)
Warranty	CareFree® 5-Year Battery 2-Year	CareFree® 5-Year Battery 5-Year	CareFree® 5-Year Battery 5-Year	CareFree® 5-Year Battery 5-Year

Features that empower.

Bullard Thermal Imaging features can help provide critical information, transforming the thermal imager into a versatile tool for many applications and helping speed up specific tasks.

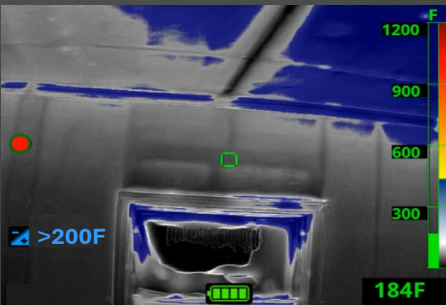
Basic Feature Pack

- Thermal Throttle
- Hot Area Detector
- Cold Area Detector
- Zoom

Advanced Feature Pack

- Thermal Throttle
- Hot Area Detector
- Cold Area Detector
- Zoom
- Image Capture
- Video Recording
- On-Screen Playback

Thermal Throttle



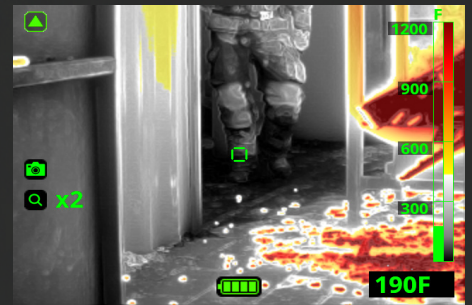
Find hidden heat sources during overhaul. Patented technology empowers users to throttle sensitivity up and down to visually isolate warmer items in any type of scene.

Hot/Cold Area Detector



Save time with instant info. Instantly identify the hottest area of the scene with Hot Area Detector. Use Cold Area Detector to find the coolest spot on-scene.

Zoom



Get closer to the scene specifics. Dial in to details even from a distance with the Zoom feature. Helpful when localizing a hot spot or performing outdoor search.

Image Capture



Quickly capture thermal snapshots. Helpful in creating customized training materials.

Video Recording



Record thermal videos. Easily downloadable for use in training sessions.

On-Screen Playback



Facilitate timely training and technical discussions. This feature is training gold. Upon capturing thermal images or video during training, utilize the on-screen playback.



QXT™ Pro

An advanced decision-making thermal imager with the highest resolution.



Top Benefits of QXT Pro

- Top Performance
- Proven Durability
- 5-Year Warranty
- X-Factor 2.0 Image Enhancement
- Seamless Gain Transition



X-Factor 2.0 Image Enhancement

A fine-tuned lineup of image boosting technology like crisp white edge highlighting and exceptionally vivid images helps recognize people and objects faster. Identify flow paths to quickly understand the scene.

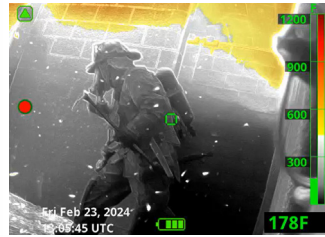
Optional Feature Packs

Basic

- Thermal Throttle
- Hot Area Detector
- Cold Area Detector
- Zoom

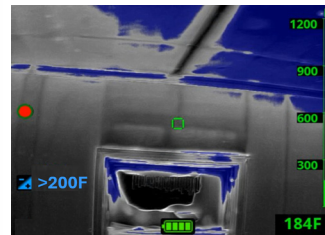
Advanced

- Thermal Throttle
- Hot Area Detector
- Cold Area Detector
- Zoom
- Image Capture
- Video Recording
- On-Screen Playback



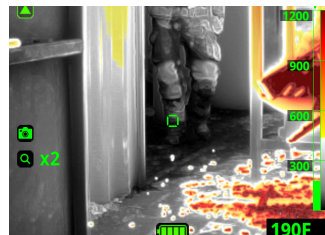
Seamless, Smooth, Instant Scenes

Move from high to low temp scenes smoothly with Seamless Gain Transition.



Faster Heat Source Identification

Speed up overhaul and search with Thermal Throttle (optional). Locate the hottest or coolest point of the scene instantly with Hot Area Detector and Cold Area Detector (optional).



Clear Decision-Making Details

Identify scene details vividly. Detect people, even in high heat. See details through transparent colorization.

AT A GLANCE

Image Enhancement	X-Factor 2.0
Resolution	640 X 480
Refresh Rate	Fast 60 Hz
Battery Life	Up to 6.5 hours

The All-Around Pro.



Technical Specifications

Warranty	5-years on imager and battery
Weight (w/ battery)	2.5 lbs / 1.145 kg
Dimensions	H 5.4" (137 mm), W 4.6 (117 mm), L 8.2" (208 mm)
Housing Material	Ultem® Thermoplastic
Bumper Material	Silicone
Upper Housing Color	Red , Blue, Yellow (standard), Orange, Black, Lime Yellow
Lower Housing Color	Black
Form Factor	Ergonomic low-strain grip with intuitive handling and angled display
User Serviceable Parts	Bumpers, cover window
Software	User upgradable firmware (via Micro-USB)
Imager and Battery Chargers	Wireless charging system for truck or office use (optional)
Power Source	Lithium-ion rechargeable internal battery
Battery Capacity	6400 mAh
Operating Time	Up to 6 hours 30 minutes at 20° C in routine conditions
Recharge Time	Up to 4 hours 15 minutes to 80%
Cold Resistance 4° F / -20° C	Continued operation
Heat Resistance 300° F / 150° C	15 minutes of continued operation
Heat Resistance 500° F / 260° C	5 minutes of continued operation
Impact Resistance	Functional after 2 meter drop on concrete
Storage Temperature	Recommended from -4°F /-20° C to 104° F / 40° C
Detector Type	Vanadium Oxide Microbolometer
Detector Resolution	640 x 512 (cropped to 640 x 480)
Spectral Response	8 μm – 14 μm
Refresh Rate	60 Hz
Dynamic Range	1200° F / 650° C
Pixel Pitch	12 μm
Field of View	40° V x 50° H
Protective Window	Glove cleanable germanium window with anti-reflective convex shape and coating
Size	3.5" (89 mm) Diagonal IPS
Display Brightness	1000 cd/m2
Contrast Ratio	800:1 (typical)
Viewing Angle (Typical)	85° All directions
Image Resolution	640 x 480
Protective Cover	Polycarbonate with a UV and abrasion-resistant surface. User replaceable.
Pixel Density	228 ppi
Gain Modes	Seamless Gain Transition: Shutterless and seamless automatic transition between low and high gain mode dependent on scene temperature.
Colorization	White-Hot, and Super Red Hot (yellow-orange-red gradient) for temperatures above 500° F OR 300° F

Part Number	Includes	
QXTPRO	QXT PRO IMAGER 1 USB CHARGER	
QXTPROBUNDLE	QXT PRO IMAGER 1 USB CHARGER 1 WIRELESS CHARGER 1 XT RETRACT	
XTTRUCKMOUNT	WIRELESS TRUCKMOUNT AND STATION CHARGER	
XTCHARGE PWR	AC ADAPTER FOR XTTRUCKMOUNT	
XTUSBCHARGE PWR	AC ADAPTER AND USB CABLE	
XTRETRACT	XT RETRACTABLE LANYARD	
XTCHARGE RING	CHARGER INTERFACE RING REPLACEMENT KIT	
XTWINDOW	DISPLAY COVER REPLACEMENT KIT	
XTWINDOWSCREWS	DISPLAY COVER REPLACEMENT SCREWS	
XTLCDGUARDQXTPRO	DISPLAY BOOT REPLACEMENT KIT	
XTBUMPER	FOOT BOOT REPLACEMENT KIT	
XTMETALX	FRONT COVER PLATE	
XTHARDCASE	XT HARD CARRYING CASE	



NXT™ Pro

An advanced decision-making thermal imager with the highest resolution and NFPA 1801 Certification.



Top Benefits of NXT Pro

- Top Performance
- Proven Durability
- 5-Year Warranty
- X-Factor 2.0 Image Enhancement
- Seamless Gain Transition
- NFPA 1801 Certified



X-Factor 2.0 Image Enhancement

A fine-tuned lineup of image boosting technology like crisp white edge highlighting and exceptionally vivid images helps recognize people and objects faster. Highlights flow paths to quickly understand the scene.

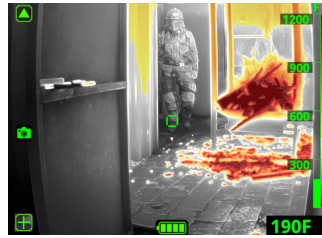
Optional Feature Packs

Basic

- Thermal Throttle
- Hot Area Detector
- Cold Area Detector
- Zoom

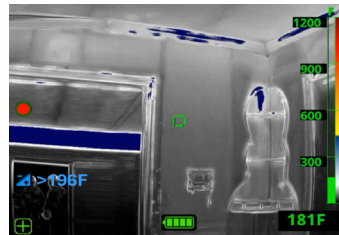
Advanced

- Thermal Throttle
- Hot Area Detector
- Cold Area Detector
- Zoom
- Image Capture
- Video Recording
- On-Screen Playback



Seamless, Smooth, Instant Scenes

Move from high to low temp scenes smoothly with Seamless Gain Transition.



Faster Heat Source Identification

Speed up overhaul and search with Thermal Throttle (optional).

Locate the hottest or coolest point of the scene instantly with Hot Area Detector and Cold Area Detector (optional).



Clear Decision-Making Details

Identify scene details vividly. Detect people, even in high heat. See details through transparent colorization.

AT A GLANCE

Image Enhancement	X-Factor 2.0
Resolution	640 X 480
Refresh Rate	Fast 60 Hz
Battery Life	Up to 6.5 hours
Certification	NFPA - 1801 Certified

The NFPA Powerhouse.



Technical Specifications

Warranty	5-years on imager and battery
Weight (w/ battery)	2.5 lbs / 1.145 kg
Dimensions	H 5.4" (137 mm), W 4.6 (117 mm), L 8.2" (208 mm)
Housing Material	Ultem® Thermoplastic
Bumper Material	Silicone
Upper Housing Color	Red (standard), Blue, Yellow, Orange, Black, Lime yellow
Lower Housing Color	Black
Form Factor	Ergonomic low-strain grip with intuitive handling and angled display
User Serviceable Pparts	Bumpers, cover window
Software	User upgradable firmware (via Micro-USB)
Imager and Battery Chargers	Wireless Charging System for truck or office use (optional)
Power Source	Lithium-ion rechargeable internal battery
Battery Capacity	6400 mAh
Operating Time	Up to 6 hours 30 minutes at 20° C in routine conditions
Recharge Time	Up to 4 hours 15 minutes to 80%
Cold Resistance 4° F / -20° C	Continued operation
Heat Resistance 300° F / 150° C	15 minutes of continued operation
Heat Resistance 500° F / 260° C	5 minutes of continued operation
Impact Resistance	Functional after 2 meter drop on concrete
Storage Temperature	Recommended from -4° F / -20° C to 104° F / 40° C
Detector Type	Vanadium Oxide Microbolometer
Detector Resolution	640 x 512 (cropped to 640 x 480)
Spectral Response	8 µm – 14 µm
Refresh Rate	60 Hz
Dynamic Range	1200 F / 650° C
Pixel Pitch	12 µm
Field of View	40° V x 50° H
Protective Window	Glove cleanable germanium window with anti-reflective convex shape and coating
Size	3.5" (89 mm) Diagonal IPS
Display Brightness	1000 cd/m2
Contrast Ratio	800:1 (typical)
Viewing Angle (Typical)	85° All directions
Image Resolution	640 x 480
Protective Cover	Polycarbonate with a UV and abrasion-resistant surface. User replaceable.
Pixel Density	228 ppi
Gain Modes	Seamless Gain Transition: Shutterless and seamless automatic transition between low and high gain mode dependent on scene temperature.
Colorization	White-Hot, and Super Red Hot (yellow-orange-red gradient) for temperatures above 500° F OR 300° F.

Part Number	Includes	Key Items
NXTPRO	NXT PRO IMAGER 1 USB CHARGER	
NXTPROBUNDLE	NXT PRO IMAGER 1 USB CHARGER 1 USB CABLE 1 WIRELESS CHARGER 1 XT RETRACT	
XTTRUCKMOUNT	WIRELESS TRUCKMOUNT AND STATION CHARGER	
XTCHARGE PWR	AC ADAPTER FOR XTTRUCKMOUNT	
XTUSBCHARGE PWR	AC ADAPTER AND USB CABLE	
XTRETRACT	XT RETRACTABLE LANYARD	
XTCHARGE RING	CHARGER INTERFACE RING REPLACEMENT KIT	
XTWINDOW	DISPLAY COVER REPLACEMENT KIT	
XTWINDOWSCREWS	DISPLAY COVER REPLACEMENT SCREWS	
XTLCDGUARDQXTPRO	DISPLAY BOOT REPLACEMENT KIT	
XTBUMPER	FOOT BOOT REPLACEMENT KIT	
XTMETALX	FRONT COVER PLATE	
XTHARDCASE	XT HARD CARRYING CASE	



DXT™

A versatile decision-making thermal imager balancing budget and performance.



Top Benefits of DXT

- **Balanced Performance**
- **Proven Durability**
- **5-Year Warranty**
- **X-Factor 2.0 Image Enhancement**
- **Seamless Gain Transition**



X-Factor 2.0 Image Enhancement

A fine-tuned lineup of image boosting technology like crisp white edge highlighting and exceptionally vivid images helps recognize people and objects faster. Identify flow paths to quickly understand the scene.

Optional Feature Packs

Basic

- Thermal Throttle
- Hot Area Detector
- Cold Area Detector
- Zoom

Advanced

- Thermal Throttle
- Hot Area Detector
- Cold Area Detector
- Zoom
- Image Capture
- Video Recording
- On-Screen Playback



Seamless, Smooth, Instant Scenes

No pause; move from high to low temp scenes smoothly with Seamless Gain Transition.



Faster Heat Source Identification

Speed up overhaul and search with Thermal Throttle (optional).

Locate the hottest or coolest point of the scene instantly with Hot Area Detector and Cold Area Detector (optional).



Clear Decision-Making Details

Detect people, even in high-heat. Identify scene details vividly.

AT A GLANCE

Image Enhancement	X-Factor 2.0
Resolution	320 X 240
Refresh Rate	Fast 60 Hz
Battery Life	Up to 8.5 hours

The Versatile Workhorse.



Technical Specifications

Warranty	5-years on imager and battery
Weight (w/ battery)	2.45 lbs / 1114 grams
Dimensions	H 5.4" (137 mm), W 4.6 (117 mm), L 8.2" (208 mm)
Housing Material	Ultem® Thermoplastic
Bumper Material	Silicone
Upper Housing Color	Red, Blue (standard), Yellow, Orange, Black, Lime yellow
Lower Housing Color	Black
Form Factor	Ergonomic low-strain grip with intuitive handling and angled display
User Serviceable Parts	Bumpers, cover window
Software	User upgradable firmware (via Micro-USB)
Imager and battery chargers	Wireless Charging System for truck or office use (optional)
Power Source	Lithium-ion rechargeable internal battery
Battery Capacity	6400 mAh
Operating Time	Up to 8 hours 30 minutes at 20° C in routine conditions
Recharge Time	Up to 4 hours 15 minutes to 80%
Cold Resistance 4° F / -20° C	Continued operation
Heat Resistance 300° F / 150° C	15 minutes of continued operation
Heat Resistance 500° F / 260° C	5 minutes of continued operation
Impact Resistance	Functional after 2 meter drop on concrete
Storage Temperature	Recommended from -4° F / -20° C to 104° F / 40° C
Detector Type	Vanadium Oxide Microbolometer
Detector Resolution	320 x 256 (cropped to 320 x 240)
Spectral Response	8 μm - 14 μm
Refresh Rate	60 Hz
Dynamic Range	1022° F / 550° C
Pixel Pitch	12 μm
Field of View	40° V x 50° H
Protective Window	Glove cleanable germanium window with anti-reflective convex shape and coating
Size	3.5" (89 mm) Diagonal IPS
Display Brightness	1000 cd/m2
Contrast Ratio	800:1 (typical)
Viewing Angle (Typical)	85° All directions
Image Resolution	320 x 240
Protective Cover	Polycarbonate with a UV and abrasion resistant surface. User replaceable.
Pixel Density	114 ppi
Gain Modes	Seamless Gain Transition: Shutterless and seamless automatic transition between low and high gain mode dependent on scene temperature.
Colorization	White-Hot, and Super Red Hot (yellow-orange-red gradient) for temperatures above 500° F OR 300° F

Part Number	Includes	Key Items
DXT	DXT IMAGER 1 USB CHARGER	
DXTBUNDLE	DXT IMAGER 1 USB CHARGER 1 WIRELESS CHARGER 1 XT RETRACT	
XTTRUCKMOUNT	WIRELESS TRUCKMOUNT AND STATION CHARGER	
XTCHARGEPOWER	AC ADAPTER FOR XTTRUCKMOUNT	
XTUSBCHARGEPOWER	AC ADAPTER AND USB CABLE	
XTRETRACT	XT RETRACTABLE LANYARD	
XTCHARGERRING	CHARGER INTERFACE RING REPLACEMENT KIT	
XTWINDOW	DISPLAY COVER REPLACEMENT KIT	
XTWINDOWSCREWS	DISPLAY COVER REPLACEMENT SCREWS	
XTLCDGUARDDXT	DISPLAY BOOT REPLACEMENT KIT	
XTBUMPER	FOOT BOOT REPLACEMENT KIT	
XTMETALX	FRONT COVER PLATE	
XTHARDCASE	XT HARD CARRYING CASE	



TXS

A rugged lightweight thermal imager at an incredible value.



Top Benefits of TXS

- Lightweight and Intuitive
- Proven Durability
- 5-Year Warranty
- X-Factor Lite Image Enhancement
- High Contrast Imagery



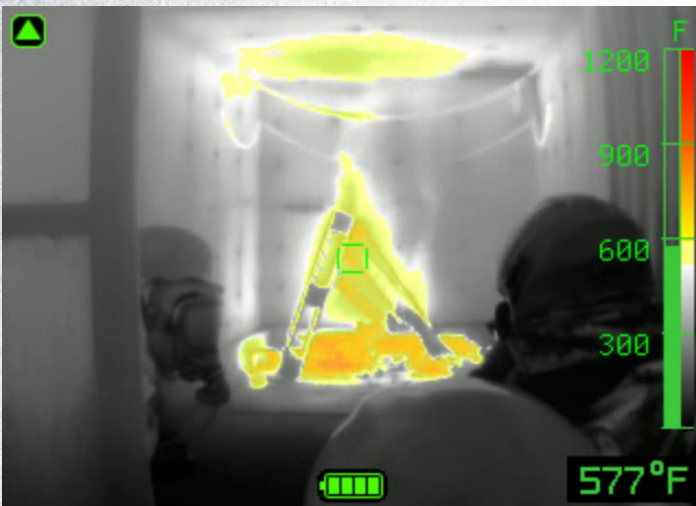
Equip More Firefighters
 Exceptional image quality at a price point to get decision-making thermal imaging in the hands of more firefighters.



Small but Powerful
 Even at only 1.6 lbs / 746 g, TXS is rugged and durable...built Bullard Tough. Designed for the unforgiving fireground and backed by Bullard Carefree® warranty.



Innovative Charging
 Manage your fleet efficiently with the robust TXS Dual Charger. Mounts easily in the apparatus and charges two imagers, two batteries, or one of each simultaneously.



X-Factor Lite Image Enhancement

A fine-tuned lineup of image boosting technology with exceptional resolution and low-lag processing of crisp details. Identify flow paths to quickly understand the scene.

AT A GLANCE

Image Enhancement	X-Factor Lite
Resolution	320 X 240
Refresh Rate	Fast 30 Hz
Battery Life	Up to 6 hours

The Lightweight.



Technical Specifications

Warranty	5-year imager; 2-year battery
Weight (w/ battery)	1.6 lbs. / 745 g
Dimensions	L (180mm/7.1in) x W (120mm/4.7in) x H (117mm/4.6in)
Housing Material	PPSU Thermoplastic
Bumper Material	Silicon
Upper Housing Color	Melon yellow (RAL 1028)
Lower Housing Color	Anthraccite grey (RAL 7016)
Form Factor	Ergonomic low-strain grip with intuitive handling
User Serviceable Parts	Bumpers, battery, attachment ring
Software	User upgradable firmware (via Micro-USB)
Imager and Battery Chargers	Two bay charger for either two batteries or two imagers, or one battery and one imager for truck of office use. (optional)
Power Source	Lithium-ion rechargeable and field replaceable battery pack
Battery Capacity	3500mAh
Operating Time	Up to 6 hours at 20° C in routine conditions
Recharge Time	Up to 3 hours 30 minutes from fully depleted
Cold Resistance 4° F / -20° C	Continued operation
Heat Resistance 300° F / 150° C	15 minutes of continued operation
Heat Resistance 500° F / 260° C	5 minutes of continued operation
Impact Resistance	Functional after 2 meter drop on concrete
Storage Temperature	Recommended from -4° F / -20° C to 104° F / 40° C
Detector Type	Vanadium Oxide Microbolometer
Detector Resolution	320 x 240
Spectral Response	8 µm – 14 µm
Refresh Rate	30Hz
Dynamic Range	1022° F / 550° C
Pixel Pitch	12 µm
Field of View	40° V x 50° H
Protective Window	Glove cleanable germanium window with anti-reflective convex shape and coating
Size	3.5" (89 mm) Diagonal TFT Active Matrix
Display Brightness	400 cd/m2
Contrast Ratio	350:1 (typical)
Viewing Angle (Typical)	Top = 60°, Bottom = 40°, Left / Right = 60°
Image Resolution	320 x 240
Protective Cover	Polycarbonate with a UV and abrasion resistant surface
Pixel Density	114 ppi
Gain Modes	Seamless Gain Transition: Shutterless and seamless automatic transition between low and high gain mode dependent on scene temperature.
Colorization	White-Hot, and Super Red Hot (yellow-orange-red gradient) for temperatures above 500° F / 260° C

Part Number	Includes	Key Items
TXS (Fahrenheit) TXSE (Celsius)	TXS CAMERA, 2 BATTERY, 1 USB CHARGER, 1 USB CABLE	
TXSBUNDLE (Fahrenheit) TXSBUNDLE (Celsius)	TXS CAMERA, 2 BATTERY, 1 DUAL CHARGER, 1 USB CABLE, 1 RETRACTABLE LANYARD	
XSCHARGER	TXS DUAL BAY CHARGER	
XSACADAPTER	TXS AC ADAPTER, US POWER CORD	
XSACADAPTERE XSACADAPTERUK XSACADAPTERAU	TXS AC ADAPTER, WITH REGIONALIZED PLUG (EUROPE, UK, OR AUSTRALIA)	
XSCHARGERSTRAPSKIT	TXS DUAL BAY CHARGER REPLACEMENT STRAPS KIT, BOLTS	
XSBATT	TXS REPLACEMENT BATTERY	
XSUSBCHARGER	USB CHARGER, 1 USB CABLE	
XSRETRACT	TXS RETRACT	
TXSREFRESHERKIT	TXS FRONT BOOT, DISPLAY BOOT, FLUORESCENT STICKERS, D-RING+BOLT	
XSHARDCASE	TXS HARD CARRYING CASE	
XSCHARGERWIREKIT	TXS CHARGER WIRING HARNESS	
XSSERVICEWINDOW	TXS SERVICE WINDOW	



Confidence in RELIABILITY.

Trust your training, your team, and your tools. It's also important to trust the company that supports these tools.

Bullard produced its first fire-tough thermal imager in 1998. Since then, Bullard has garnered a strong reputation for thermal imagers that survive and thrive in the rugged fireground.



Cost of ownership.

Understanding how your thermal imagers will be supported in the field is critical. Bullard Thermal Imager total cost of ownership (TCO) rates among the most favorable in the industry due to support in the field, durability, preventative maintenance options, and the Carefree® Warranty.

Additional value.

Upgrade Program

Keep your department in step with technology advancements with the affordable Bullard Upgrade and Trade-In Programs.

Training

Options can include in-person training from Bullard experts with decades of firefighting experience and online training resources for more flexible training deployment.



SCAN ME



Durability

Durability is one of the most important tenants of Bullard design.

Bullard XT Series Thermal Imagers are designed to an IP67 rating for water resistance and 2 meter drops on concrete.



Maintenance

With many field-replaceable parts, Bullard Thermal Imagers are easily maintained.

Bullard also offers Preventative Maintenance Service to keep your fleet operating at its best.



Carefree® Warranty

Bullard Thermal Imagers are purpose-built to be Bullard Tough. We're confident in their performance when used as intended in the unforgiving fireground. Our CareFree 5-Year Warranty covers all material defects under intended use and service. Plus, you'll get fast turnaround, free shipping, and new housing/factory seals when appropriate. See complete warranty information at www.bullard.com.

www.bullard.com

Move faster. Applications.

Bullard Thermal Imagers are designed to quickly provide critical information and bring efficiency to a variety of fire service tasks. Use these tools on every call.

Size-Up



Top Feature: Hot Area Detector

Quickly and automatically pinpoint the hottest area of any scene.

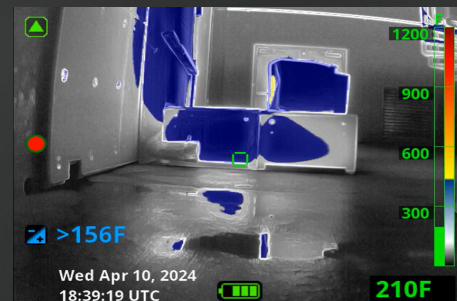
Fire Attack



Top Feature: Super Red Hot

Help facilitate confident decisions with transparent colorization that easily identifies changing heat conditions.

Overhaul



Top Feature: Thermal Throttle

Quickly pinpoint heat sources, even in low temperature scenes during overhaul.

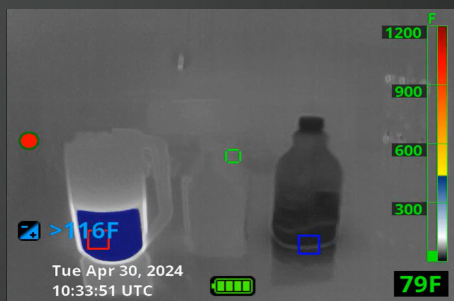
Training



Top Feature: On-Screen Playback

Use on-screen playback, image capture, and video recording for timely training discussions.

Hazmat



Top Feature: Cold Area Detector

Help quickly identify liquid levels in containers, release points, and movement. Spot escaped liquids at a glance.

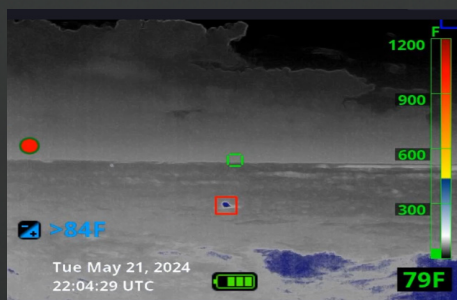
Smell & Bells Calls



Top Feature: Thermal Throttle

Spot overheated light ballasts, fuses, or other electrical equipment that may be a source of odor or smoke.

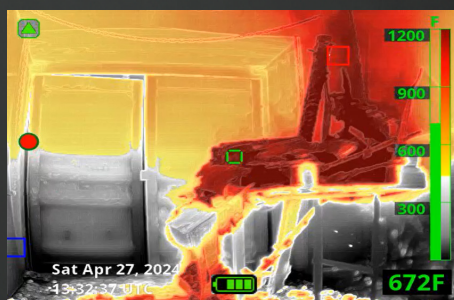
Water Rescue



Top Feature: Thermal Throttle

Locate victims in above-surface water rescue situations.

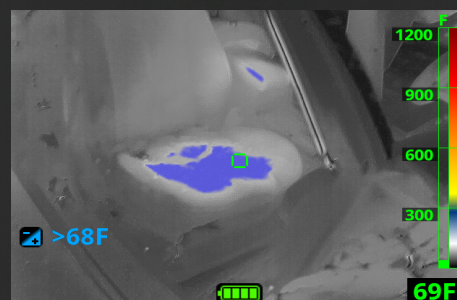
Egress Path



Top Feature: Super Red Hot

Even in scenes experiencing extreme heat and colorization, see through the transparent Super Red Hot to help identify areas of egress.

Motor Vehicle Incidents



Top Feature: Thermal Throttle

Help identify skid marks, heat signatures from occupants who have left the vehicle, and locate victims.



SAFETY. SINCE 1898.™

Updates at your fingertips.



At Bullard, we know every fire department is different. That's why our imagers can be customized to your specific needs with the myBullard Imager Configurator.

MyBullard gives your department instant access to software updates and feature upgrades. This value-added Configurator is easy to use and automatically included with QXT Pro, NXT Pro, and DXT.

Visit www.Bullard.com or your nearest Bullard Distributor.

Bullard Center
2421 Fortune Drive
Lexington, KY 40509 • USA
877-BULLARD (285-5273)
Tel: +1-859-234-6616

Americas Operations
1898 Safety Way
Cynthiana, KY 41031 • USA
877-BULLARD (285-5273)
Tel: +1-859-234-6616

Bullard GmbH
Dieselstrasse 8a
53424 Remagen • Germany
Tel: +49-2642 999980

Bullard Asia Pacific Pte. Ltd.
51 Changi Business Park Central 2
#03-04 The Signature
Singapore 486066
Tel: +65 6745 0556

www.bullard.com

©2024 Bullard. All rights reserved.
(0624)