



QXT™ Pro

An advanced decision-making thermal imager with the highest resolution.



Top Benefits of QXT Pro

- Top Performance
- Proven Durability
- 5-Year Warranty
- X-Factor 2.0 Image Enhancement
- Seamless Gain Transition



X-Factor 2.0 Image Enhancement

A fine-tuned lineup of image boosting technology like crisp white edge highlighting and exceptionally vivid images helps recognize people and objects faster. Identify flow paths to quickly understand the scene.

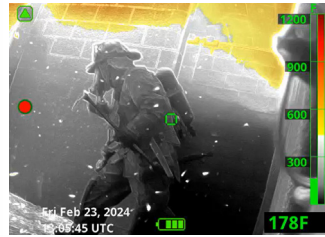
Optional Feature Packs

Basic

- Thermal Throttle
- Hot Area Detector
- Cold Area Detector
- Zoom

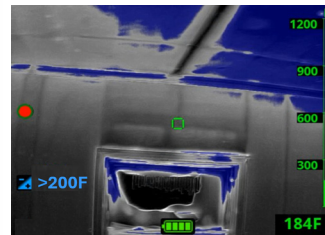
Advanced

- Thermal Throttle
- Hot Area Detector
- Cold Area Detector
- Zoom
- Image Capture
- Video Recording
- On-Screen Playback



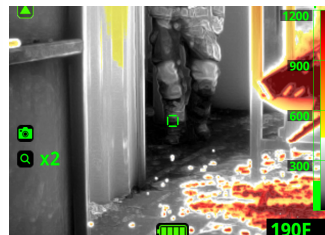
Seamless, Smooth, Instant Scenes

Move from high to low temp scenes smoothly with Seamless Gain Transition.



Faster Heat Source Identification

Speed up overhaul and search with Thermal Throttle (optional). Locate the hottest or coolest point of the scene instantly with Hot Area Detector and Cold Area Detector (optional).



Clear Decision-Making Details

Identify scene details vividly. Detect people, even in high heat. See details through transparent colorization.

AT A GLANCE

Image Enhancement	X-Factor 2.0
Resolution	640 X 480
Refresh Rate	Fast 60 Hz
Battery Life	Up to 6.5 hours

The All-Around Pro.



Technical Specifications

Warranty	5-years on imager and battery
Weight (w/ battery)	2.5 lbs / 1.145 kg
Dimensions	H 5.4" (137 mm), W 4.6 (117 mm), L 8.2" (208 mm)
Housing Material	Ultem® Thermoplastic
Bumper Material	Silicone
Upper Housing Color	Red , Blue, Yellow (standard), Orange, Black, Lime Yellow
Lower Housing Color	Black
Form Factor	Ergonomic low-strain grip with intuitive handling and angled display
User Serviceable Parts	Bumpers, cover window
Software	User upgradable firmware (via Micro-USB)
Imager and Battery Chargers	Wireless charging system for truck or office use (optional)
Power Source	Lithium-ion rechargeable internal battery
Battery Capacity	6400 mAh
Operating Time	Up to 6 hours 30 minutes at 20° C in routine conditions
Recharge Time	Up to 4 hours 15 minutes to 80%
Cold Resistance 4° F / -20° C	Continued operation
Heat Resistance 300° F / 150° C	15 minutes of continued operation
Heat Resistance 500° F / 260° C	5 minutes of continued operation
Impact Resistance	Functional after 2 meter drop on concrete
Storage Temperature	Recommended from -4°F /-20° C to 104° F / 40° C
Detector Type	Vanadium Oxide Microbolometer
Detector Resolution	640 x 512 (cropped to 640 x 480)
Spectral Response	8 μm – 14 μm
Refresh Rate	60 Hz
Dynamic Range	1200° F / 650° C
Pixel Pitch	12 μm
Field of View	40° V x 50° H
Protective Window	Glove cleanable germanium window with anti-reflective convex shape and coating
Size	3.5" (89 mm) Diagonal IPS
Display Brightness	1000 cd/m2
Contrast Ratio	800:1 (typical)
Viewing Angle (Typical)	85° All directions
Image Resolution	640 x 480
Protective Cover	Polycarbonate with a UV and abrasion-resistant surface. User replaceable.
Pixel Density	228 ppi
Gain Modes	Seamless Gain Transition: Shutterless and seamless automatic transition between low and high gain mode dependent on scene temperature.
Colorization	White-Hot, and Super Red Hot (yellow-orange-red gradient) for temperatures above 500° F OR 300° F

Part Number	Includes	
QXTPRO	QXT PRO IMAGER 1 USB CHARGER	
QXTPROBUNDLE	QXT PRO IMAGER 1 USB CHARGER 1 WIRELESS CHARGER 1 XT RETRACT	
XTTRUCKMOUNT	WIRELESS TRUCKMOUNT AND STATION CHARGER	
XTCHARGE PWR	AC ADAPTER FOR XTTRUCKMOUNT	
XTUSBCHARGE PWR	AC ADAPTER AND USB CABLE	
XTRETRACT	XT RETRACTABLE LANYARD	
XTCHARGE RING	CHARGER INTERFACE RING REPLACEMENT KIT	
XTWINDOW	DISPLAY COVER REPLACEMENT KIT	
XTWINDOWSCREWS	DISPLAY COVER REPLACEMENT SCREWS	
XTLCDGUARDQXTPRO	DISPLAY BOOT REPLACEMENT KIT	
XTBUMPER	FOOT BOOT REPLACEMENT KIT	
XTMETALX	FRONT COVER PLATE	
XTHARDCASE	XT HARD CARRYING CASE	