

# Salus Quick Start Guide

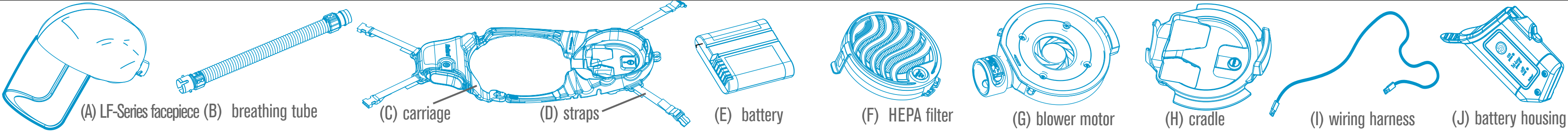
Meet Your New SALUS HC Powered Air-Purifying Respirator

READ, UNDERSTAND AND FOLLOW ALL INSTRUCTIONS AND WARNINGS IN THE SALUS HC PAPR USER MANUAL BEFORE USING THE RESPIRATOR.

# salus HC

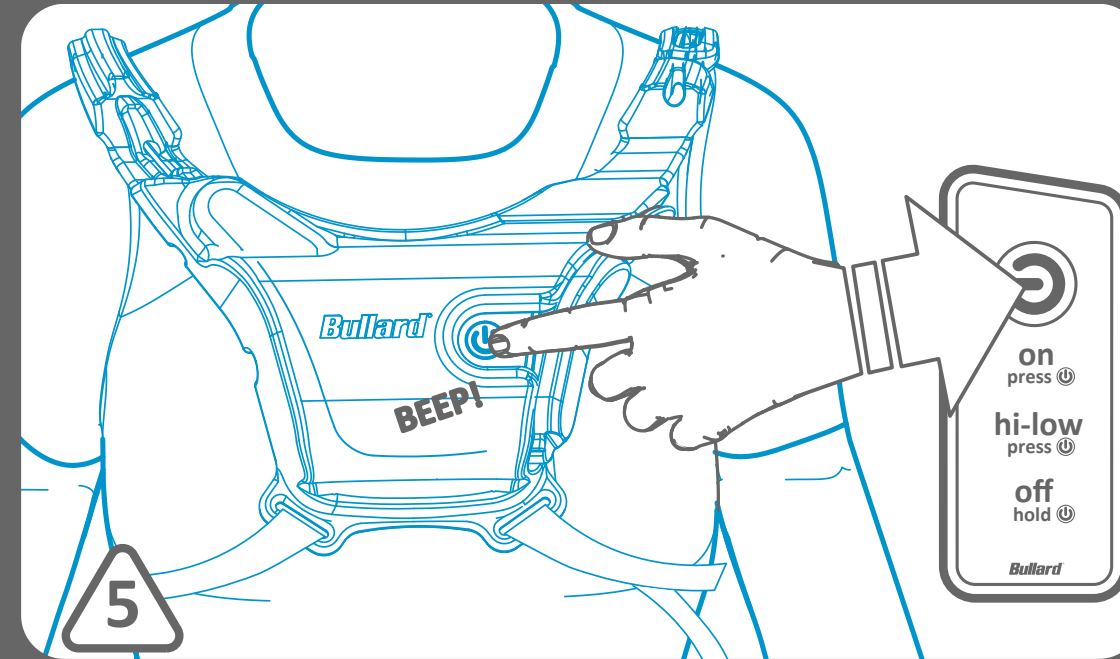
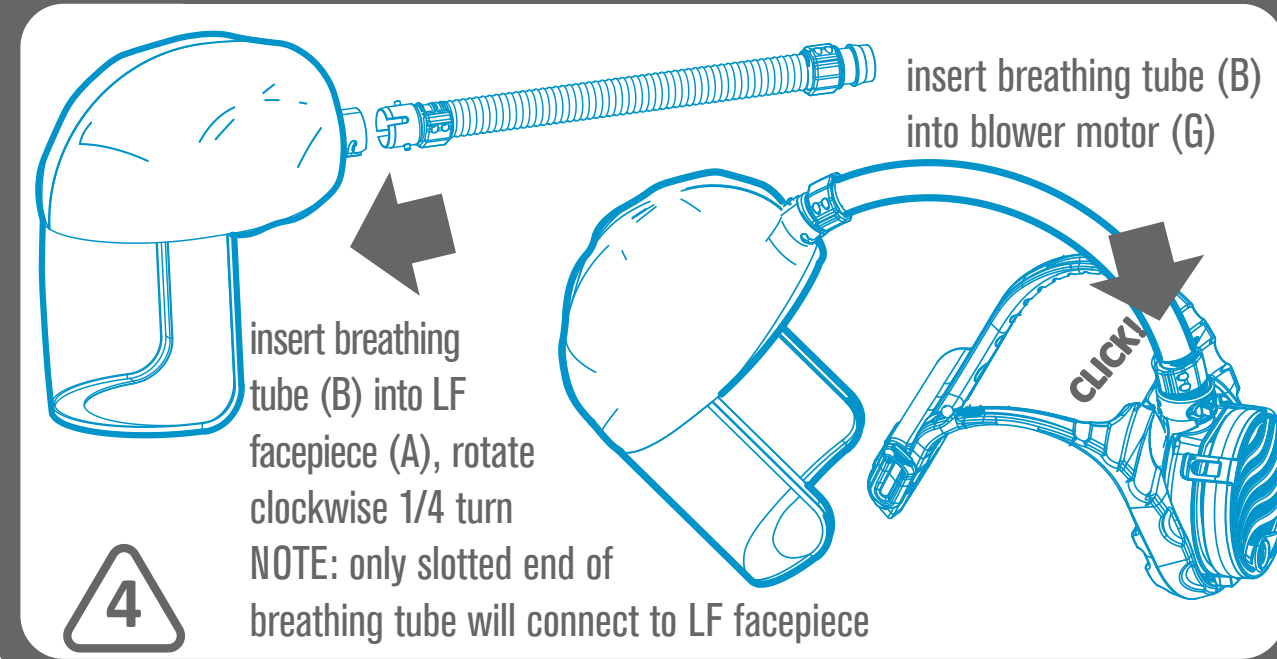
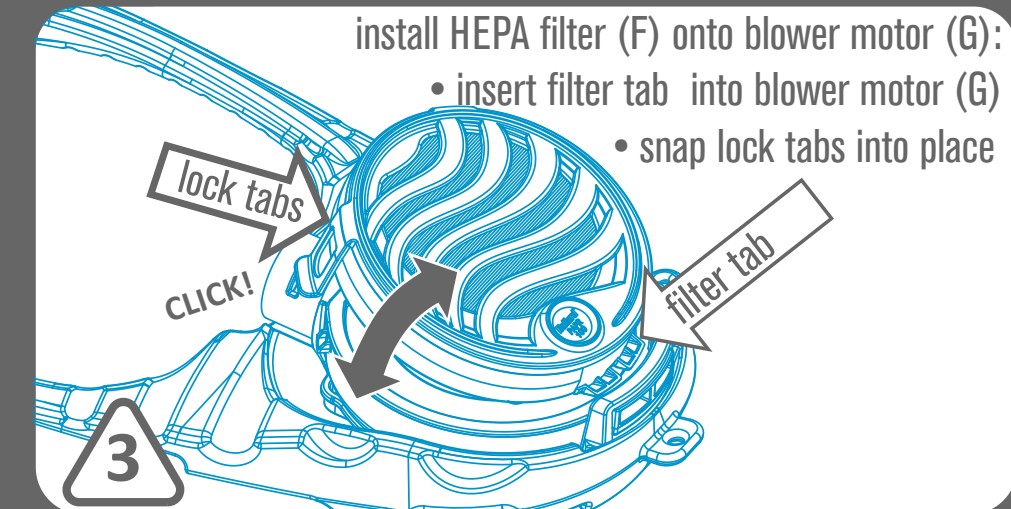
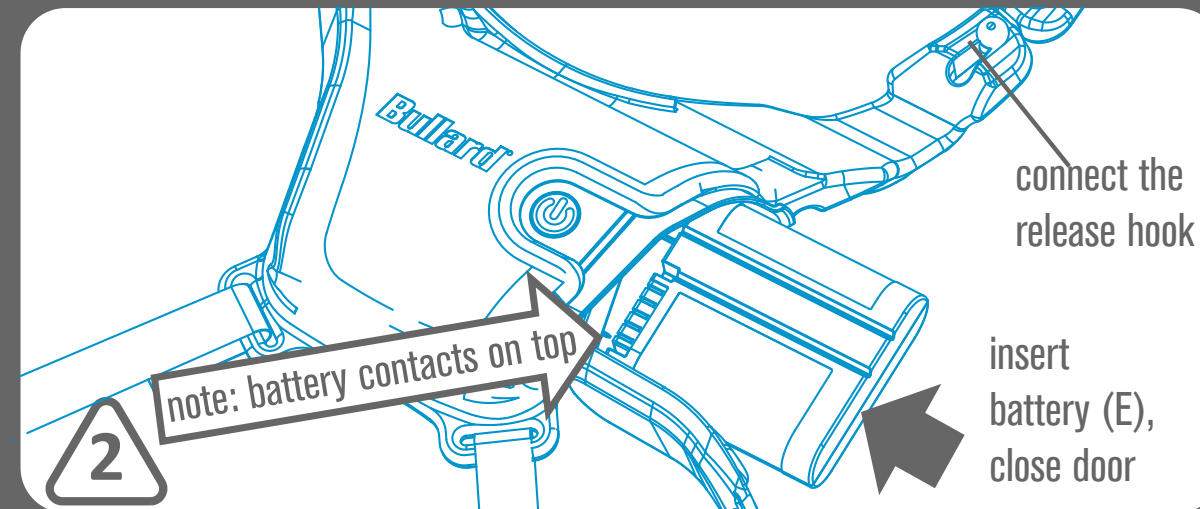
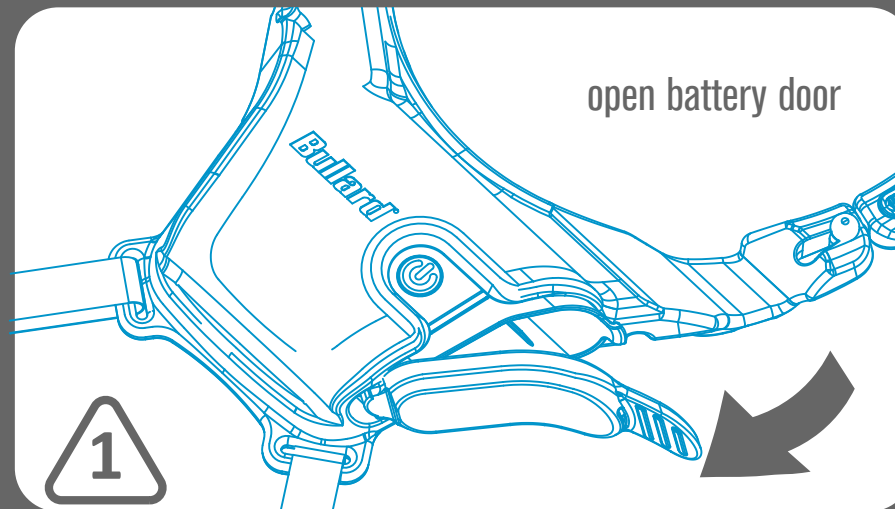
## D O N N I N G , D O F F I N G , A N D P A P R A S S E M B L Y

PARTS LIST



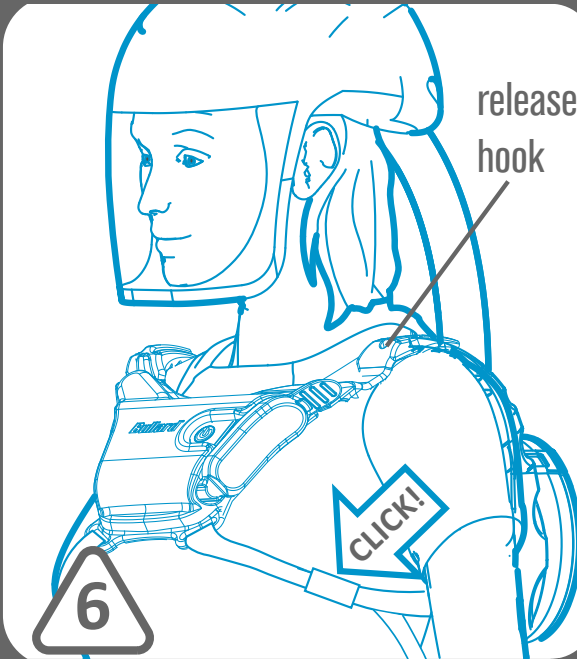
### OUT OF THE BOX

NOTE: when using a new battery (E) for the first time, it must be electronically activated for use by inserting it into the charger for several seconds. a new battery (E) will not power the unit until it is activated.



**DONNING STEPS:**

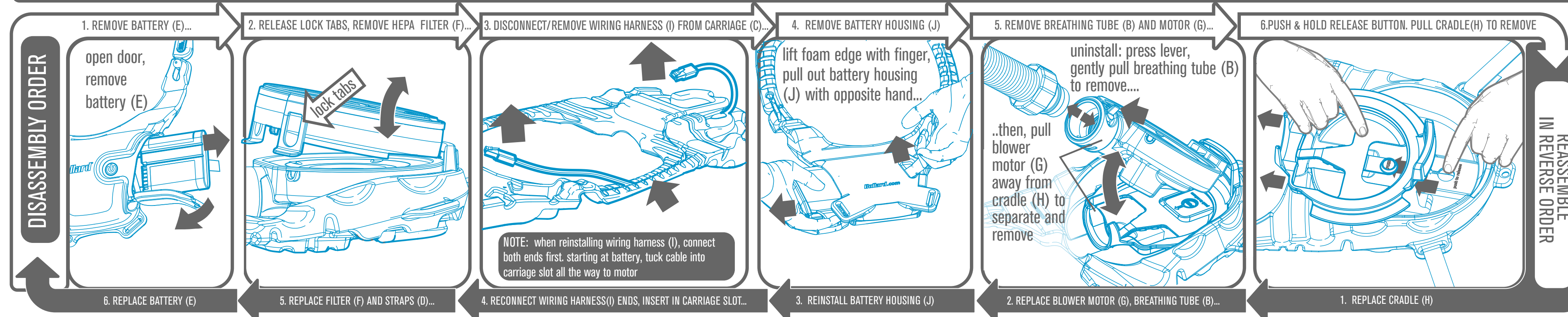
1. turn unit ON (press button once, turns on in 5 secs)
2. place assembled unit onto shoulders
3. don LF facepiece
4. connect body strap buckles, adjust straps
5. press button again to toggle between hi-low



**DOFFING STEPS:**

1. release body strap buckles
2. disconnect the release hook
3. remove PAPR assembly to right side of your body
4. remove LF facepiece
5. turn unit off (hold button)

## D I S A S S E M B L E / R E A S S E M B L E P A P R



### Your Tools

Interactive user manual  
Person-to-person, virtual and video training



Scan with any smartphone or visit  
<https://www.bullard.com/respiratory/salus-hc/>

### Pre-Inspection

Before donning the PAPR, inspect the entire system (filter, battery pack, loose-fitting facepiece and breathing tube) for wear and damage, including tears, holes and cracks. Ensure the filter has not exceeded its expiration date. Power the blower on and check the low flow alarm. Simulate a low flow condition by blocking the filter inlet with the palm of one's hand. The blower motor will speed up in an attempt to compensate and shortly after an audible alarm will sound. Remove the obstruction and the alarm will stop once flow is restored. Do not don the PAPR if any parts are missing or damaged, replace them with only SALUS HC Powered Air-Purifying Respirator (PAPR) system replacement parts.

### Cleaning, Storage, Disposal

- Clean, dry and inspect prior to each use and before storage.
- Use warm water, mild dishwashing liquid and a soft brush to remove any dirt from exterior surfaces.
- As per CDC guidelines for disinfection, diluted household bleach solutions, alcohol solutions with at least 70% alcohol, and most common EPA-registered household disinfectants should be effective to disinfect exterior surfaces.
- Mechanical laundering of loose-fitting facepiece is not recommended.
- Do not immerse equipment in water.
- Damaged or worn-out batteries should be disposed of in accordance with local, state and federal regulations at an approved hazardous waste recycling or disposal facility.
- Used filters and loose-fitting facepieces should be disposed of based on the contaminants collected on it and according to local environmental regulations.
- Store PAPR in a clean, dry area.

